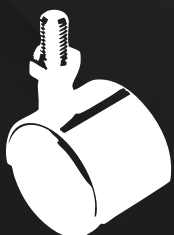


EAC

COMPONENTS UK



CASTER AND WHEELS

1136 Series

Model Type: With Brake
Connection Type: Bolt Connection



GO TO
PRODUCTS
GROUP

1140 Series

Model Type: No Brakes
Connection Type: Table Mounted



GO TO
PRODUCTS
GROUP

1144 Series

Model Type: With Brake
Connection Type: Table Mounted



GO TO
PRODUCTS
GROUP

1153 Series

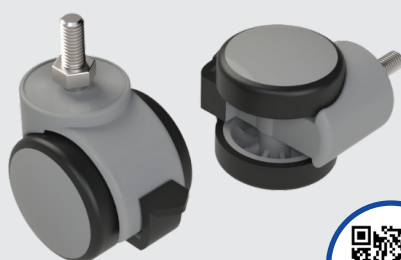
Model Type: No Brakes
Connection Type: Pin Connection



GO TO
PRODUCTS
GROUP

11248 Series

Model Type: With Brake
Connection Type: Bolt Connection



GO TO
PRODUCTS
GROUP

EAC

COMPONENTS UK

